

Micro-OverHead 2.2

Copyright © 1993 by Fred L. Freel
and [Micro-Bytes\Wordware](#)

Registered Version 3.0



Note: The Help File uses **Hot Spots**. Click on a control, button or field-area that you want information on.

Micro-OverHead is a "Front End," for the [Micro-Bytes\Wordware Modules](#) described herein. It's a Mini-Shell designed to position itself at the top edge of the Windows desktop with "stay on top" capability, and allows you to run any of its Modules by clicking on the appropriate [mini-icon](#) button. If you find that the graphic representations illustrated in this Help file differ from those incorporated in Micro-OverHead Version 2.2, please realize that what the [Registered User](#) will receive, Version 3.x, is being displayed.

Micro-OverHead requires [VBRUN200.DLL](#) be situated in your Windows or Windows-System directory. This is Microsoft's Dynamic Link Library for Visual Basic.

Micro-Boot Version 5.1



This button [closes](#) Micro-OverHead.

This button initiates access to [Micro-Boot](#).

This button provides loading functions for [Micro-Launch](#).

This button brings up [Micro-Cal](#), a multi-year, multi-month calendar.

This button initializes [Micro-Fone](#), a telephone dialer and interactive [FoneBook](#).

This button calls [Micro-Squeeze](#), a directory compressor [linked](#) to popular compression software via DOS.

This button is a [toggle](#) to turn the clock display on or off.

This button allows you to check available [disk space](#) on drives [A](#) through [F](#).

This button is a quick route to a [DOS](#) window in 386 [enhanced mode](#).


This button will allow you to access this [Help](#) file for assistance in running our various Modules.

This button provides a graphical representation of [System Resources](#) available, or additional information at a [click](#) of your mouse.


System Configuration

Windows Mode: 386 Enhanced
Free Memory: 7,568 meg
Math Co-Processor: None
CPU type: 80386
Video resolution: 12,000 x 9,000 twips
Video print size: 8.33 x 6.25 inches
System: 49% GDI: 49% User: 61%

You may also [iconize Micro-OverHead](#) by selecting the Minimize Arrow.

For files with no extension, or an extension not linked to Notepad or Paintbrush, our little  is not a button, but a real [BasketCase](#). [Drag](#) a file from [File Manager](#) into the Basket, and you'll get a view . . . [garbage](#), or not. It works with [graphics](#) and [text](#).

Clicking on our Micro-Bytes-Wordware logo displays **copyright** information for [Micro-OverHead](#).

Clicking on the clock itself will toggle the readout from [analog](#)  to [digital](#).

2/2/93
10:52 PM

This control arrow drops down the Launcher with a list of programs you've added.

Micro-Config 5.0

Copyright © 1991, 1992, and 1993 by Fred L. Freel
and [Micro-Bytes\Wordware](#)

Registered Version 5.0

Micro-Config is a stand-alone [DOS](#) program used to re-configure the [Root Directory](#) of your [boot](#) drive. It is accessible from DOS, to alter the configuration files AUTOEXEC.BAT, CONFIG.SYS, WIN.INI and SYSTEM.INI when you are outside of Windows. There is no need to access it from windows, as all configurations in this environment are handled by Micro-Boot.

[Using Micro-Config from DOS](#)

Using Micro-Config from DOS

If some of your configurations are [outside of Windows](#), as ours are, you may want to run the [Micro-Config](#) program from DOS. If so, you must first make the [Micro-OverHead](#) directory your [current](#) directory. You may re-configure your system by entering `MBCONFIG 0nn`, where "0nn" is the [Micro-Boot Level number](#) you wish to apply. You will be prompted as to whether you want to [also](#) re-configure your Windows directory files. Micro-Config will not cause a reboot when accessed from DOS. Simply [press Ctrl-Alt-Del to reboot](#).

The [0nn](#) configurations we've supplied are only for use as [examples](#), as they are only typical for a 386/486 system. You will have to edit or replace them to correspond to your needs. The files `Autoexec.inf`, `Config.inf`, `Bootexec.inf` and `Bootcfg.inf` shouldn't be used for booting, but can be loaded into the [Micro-Boot Comparison Editor](#).

Micro-Boot Version 5.1

Copyright © 1992, and 1993 by Fred L. Freel
and [Micro-Bytes\Wordware](#)

Registered Version 5.1

Micro-Boot incorporates viewing, editing and configuration capabilities that are not provided in the DOS level Configurator, [Micro-Config](#).

Unlike most Shareware software, this is a fully working version of Micro-Boot. Shareware software is generally provided "as is" to the user for evaluation purposes. The user, if satisfied with it's performance, is obligated to pay a registration fee to continue using it.


[Micro-Bytes\Wordware](#), on the other hand, will supply a complete update of their Shareware to the Registered User. They receive a high density 5¼ or 3½ inch disk containing the latest version of Micro-OverHead with all of its modules functioning. Please specify the [type of disk](#) you wish to receive when ordering your software.

The registered version is also [considerably different](#), in that no "advertising" logos or order forms are included. This preserves disk space and speeds up execution performance, and this help file is replaced with one that is fully context sensitive.

Any of the Micro-OverHead Utilities described herein may also be newer versions than indicated here.

Please fill out the Order Form located in the About Micro-OverHead Menu. It's accessed by clicking on



our  logo. The order form is designed for use on VGA displays of 800x600 resolution or better. If you have lesser resolution, select [Help with Order Form](#) in the Order Form menu. Fill in the necessary information, then return to the original Order Form. You may then [print](#) the 800x600 Order Form. Prices and mailing information are included on the Order Form. Please be sure to indicate the [disk format desired](#).

Thanks . . . [Micro-Bytes\Wordware](#).

[Using Micro-Boot](#)

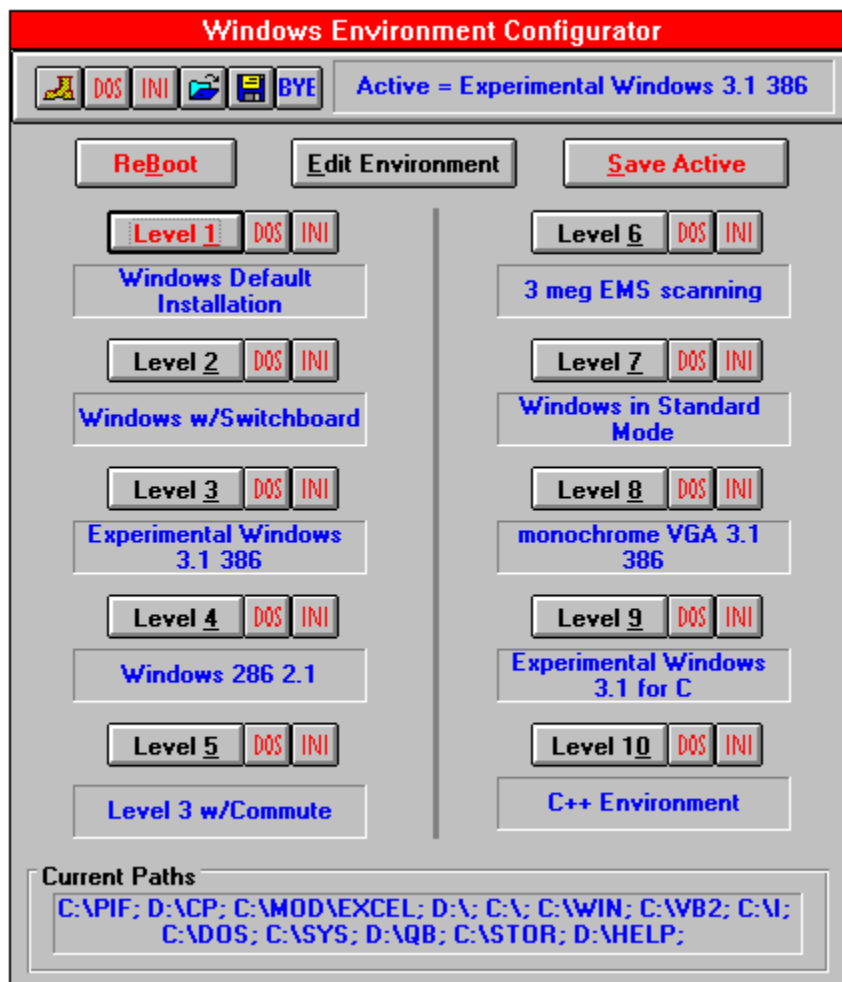
Using Micro-Boot

Editor

The registered version of Micro-OverHead [automatically configures](#) your current configuration files to [Level 1](#) during installation. If you have been running an earlier version of Micro-Boot, always copy your current configuration files to a [safe directory](#) prior to installation to prevent over-writing them.

You must use **CAUTION** when selecting Micro-Boot's **REBOOT** option. If you've made any changes to the positioning of windows in Program Manager or File Manager since you started your current Windows session, **those changes will be lost**. You will **NOT** be prompted by Windows (Rev 3.1) to confirm your decision to do a Ctrl-Alt-Del.

The first line of each configuration file should be a [REM](#) line describing the contents of the that file. The REM line is read by both [Micro-Config](#) and [Micro-Boot](#) for identification purposes. INI files use a semi-colon [;] instead of a REM. View the sample files for examples.



Side-by-Side Configuration Editor



For [further information](#) check the Winini.wri and System.wri files that came with Windows, the Windows 3.1 User's Guide, or the *.wri files accompanying the [Microsoft Windows Resource Kit](#). These files can't be used for booting, but they can be used in the comparison side of the editor as reference.

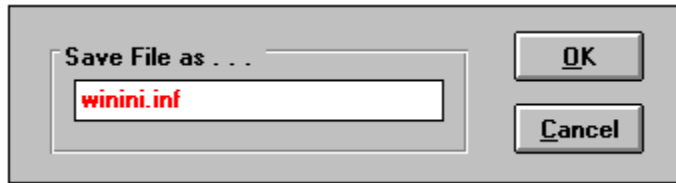
Allows you to **Load** a selected **Config.sys configuration** file into the side-by-side Editor.

Allows you to **Load** a selected **Autoexec.bat configuration** file into the side-by-side Editor.

Allows you to **Load** a selected **System.ini configuration** file into the side-by-side Editor.

Allows you to **Load** a selected **Win.ini configuration** file into the side-by-side Editor.

Allows you to [Save](#) the file currently being edited. You can overwrite the **extension only**, if you want it to appear in the [Load Editor file listing](#).



You can overwrite the **extension only**, if you want it to appear in the [Load Editor file listing](#).

Will Save the file as shown in the filename box.

Will [return](#) you to the Configuration Editor.

Allows you to Load in one of the other 10 related configuration files for comparison, and to Cut and Paste text into the Edit File area. Configuration file [Bootexec.inf](#) is not for use when rebooting, but is an **example of Microsoft's defaults** for some of the parameters used in their DOS file. It **may not be correct** nor function correctly when used in the combinations illustrated.

Allows you to Load in one of the other 10 related configuration files for comparison, and to Cut and Paste text into the Edit File area. Configuration file [Bootcfg.inf](#) is not for use when rebooting, but is an **example of Microsoft's defaults** for some of the parameters used in their DOS file. It **may not be correct** nor function correctly when used in the combinations illustrated.

Allows you to Load in one of the other 10 related configuration files for comparison, and to **Cut** and **Paste** text into the Edit File area. Configuration file **Sysini.inf** is not for use when rebooting, but is an **example of Microsoft's defaults** for some of the parameters used in their **INI** file. It **may not be correct** nor function correctly when used in the combinations illustrated.

Allows you to Load in one of the other 10 related configuration files for comparison, and to Cut and Paste text into the Edit File area. Configuration file [Winini.inf](#) is not for use when rebooting, but is an **example of Microsoft's defaults** for some of the parameters used in their INI file. It **may not be correct** nor function correctly when used in the combinations illustrated.

Provides **Copy** functions for the editor. Copy may be used in the **Configuration** or Edit File areas, but not **Paste** and **Clear**. The latter are only available in the Edit File area.

Provides [Cut](#) functions for the editor, and is only available in the [Edit](#) File area.

Provides [Paste](#) functions for the editor, and is only available in the [Edit](#) File area.

Provides [Clear](#) functions for the editor, and is only available in the [Edit](#) File area.

Provides case sensitive [Search](#) functions for the editor, and is only available in the [Edit](#) File area.

Allows you to [Search Again](#) for the previously defined text.

Returns you to the [Windows Environment Configurator](#).

Reflects the current Configuration Level per the REM description of the Level in use.

Is our way of saying goodbye. [Exit](#) Micro-Boot

Provides access to the side-by-side [Configuration Editor](#). Redundant with larger [command button](#).

Provides access to the side-by-side [Configuration Editor](#).

Will save your current [Autoexec.bat](#), [Config.sys](#), [Win.ini](#) and [System.ini](#) files to a Configuration Level of your choice. See larger [Save As](#) command button.

Will save your current [Autoexec.bat](#), [Config.sys](#), [Win.ini](#) and [System.ini](#) files to a Configuration Level of your choice. During installation Micro-OverHead (registered version only) will provide a "default" configuration as Level 1 because you know the configuration you are using presently is functionally correct. You should also use the [Save Active](#) option if you install any **new software or fonts**, as such procedures often [modify](#) your INI and/or DOS System files.



Will only renew your [Win.ini](#) file. The DOS level files have already been copied.

Will only renew your [System.ini](#) file. The DOS level files have already been copied.

Will renew both [Win.in](#) and [System.ini](#) files. The DOS level files have already been copied.

Will return you to Micro-Boot.

Select Level to save Active System files to . . .

1

2

3

4

5

6

7

8

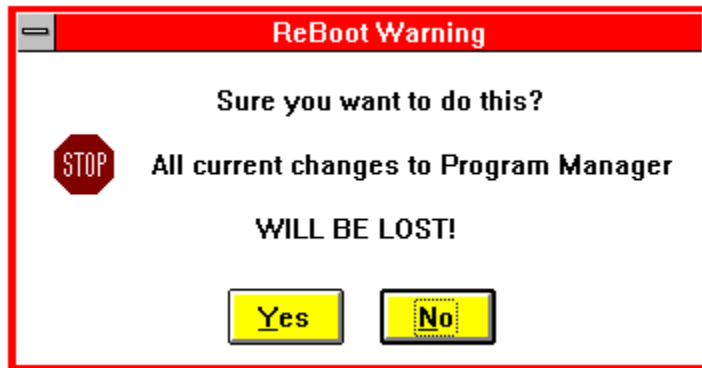
9

10

Don't forget to edit your files' REMs for
identification purposes

Configuration Level of your choice

Will cause a software reboot. See larger [Reboot](#) command button.



In case you hit the **Yes** button in **error**, you will be given another chance to abort the reboot.



Selecting **No** will **exit** Micro-Boot.

Will cause a software reboot. This "warm start" is, in effect, the same as pressing the Ctrl-Alt-Del keys at the same time. Some **points to ponder**: [1] Any changes you've made to the location of your windows in Program Manager or File Manager during the current session will be lost. [2] If you're booting to another screen mode, say from Super VGA to a lesser resolution, you may lose custom icons you've applied if those icons are not in a pathed directory. [3] Use CARE when experimenting with this option. It is a quicker method of exiting Windows, and rebooting with a different configuration, **but . . .**

If you are using Microsoft's Smart Drive for a disk cache, it will be purged before the reboot takes place.

Level Buttons 1...10 . . . will copy, **without prompt**, the selected alternate **Level Autoexec.bat** and **Config.sys** files to the root directory of your boot drive. A **backup** of the existing files will be made as **Autoexec.00x** and **Config.00x**.

You will then be prompted as to whether you want your **INI** files copied as well. If you haven't altered them, it isn't necessary (see **Save Active**). When you select to copy either or both of them, **backup files** **Win.00x** and **System.00x**, and **Progman.00x** will be created in your Windows directory.

The captions under each Level Button refer to the [REM description](#) for each configuration file. These descriptions should not be too long, as there is only so much space available in the [Active =](#) Menu panel, or too long a description may not be fully viewable in the Level Button captions either.

Will allow you to view the **Autoexec/Config** files **together** for the Level they are adjacent to.

Will allow you to view the **Win/Sys** files **together** for the Level they are adjacent to.

Will allow you to view the **Autoexec/Config** files **together** for the **current** Windows session.

Will allow you to view the **Win/Sys** files **together** for the **current** Windows session.

Displays the current [Environment Path](#) settings.

